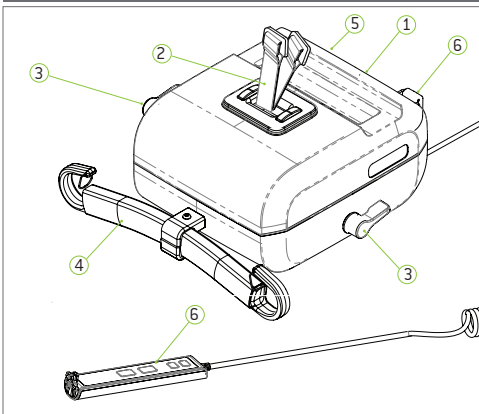




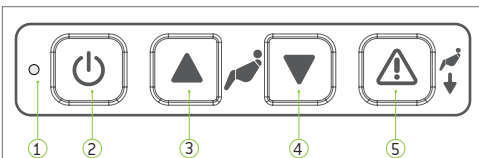
**Important!** This quick reference guide does not replace the user manual which can be downloaded at [www.humancaregroup.com](http://www.humancaregroup.com).  
**Read all instructions before use!**

## Components



- |                    |                       |
|--------------------|-----------------------|
| 1 Secondary Panel  | 4 Hanger Bar          |
| 2 Lift Belts       | 5 Emergency Stop      |
| 3 Direction Levers | 6 Hand Control (IPX7) |

## Secondary Panel Functions



- |                          |                      |
|--------------------------|----------------------|
| 1 Status Indicator Light | 4 Lower Lift         |
| 2 Power On/Off           | 5 Emergency Lowering |
| 3 Raise Lift             |                      |

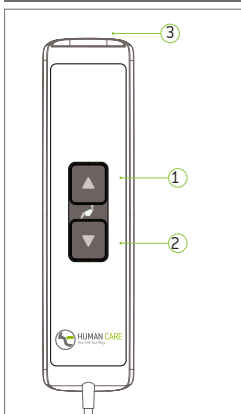
## Status Indicator Lights

- |  |   |
|--|---|
| <b>Flashing Green</b><br>On/Ready for Use<br>Full Battery            | <b>Constant Red</b><br>Safety Catch Engaged<br>Troubleshooting!       |
| <b>Flashing Yellow</b><br>On/Ready for Use<br>Charge Battery Warning | <b>Constant Yellow</b><br>Lift Charging<br>Functions Blocked          |
| <b>Flashing Red</b><br>On/Ready for Use<br>Low Battery               | <b>Flashing Green/Yellow</b><br>Service Warning<br>Perform Inspection |
| <b>Constant Green</b><br>Lift in Use<br>Lift Loaded                  | <b>Flashing Red/Yellow</b><br>Service Passed<br>Battery Low           |



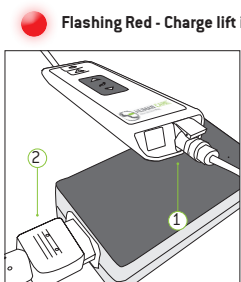
**Important!** This overhead lift has been designed and tested for indoor use with one patient at a time.  
This product must not be immersed in water.  
**Read all instructions for full product information!**

## Hand Control Functions



- 1 Up Button
- 2 Down Button
- 3 USB-C and Charge Port

## Charging the Lift



**Flashing Red - Charge lift immediately!**

- 1 Connect charger plug to handset.
  - 2 Connect plug to charger and insert plug into wall to charge.
- The charger must only be connected to an earthed socket.  
**⚠ Note:** If the emergency stop is activated, the lift will not charge!

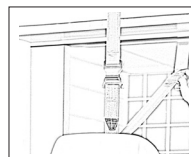


**Important! The lift can only be used with a Human Care charger and must be disconnected to use the lift.**

Models: 55300H  
Human Care HC AB. All Rights Reserved.



## Room to Room Transfer Feature



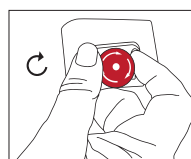
### Room to room transfers

Activate desired belt by turning directional lever. If lever faces towards the leg hook, the belt nearest to the leg hook is active. If it faces towards the hanger bar, the belt closest to the bar is active.



**Important! Do not turn the lever unless both belts are connected to their respective rail rollers. The lever must always point to the connected belt.**

## Using the lift



### Emergency Stop Activation

Press down on red button to activate.

### Emergency De-Activation

Turn red button clockwise.

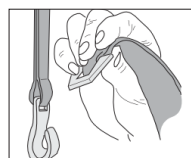


**Important! Emergency lowering must only be used in emergency situations. There will be a 3 second delay.**

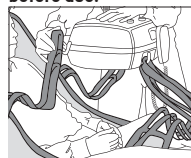


To activate, press "Down" button (4) and secondary panel emergency lowering button (5) at the same time

### Suspending the lift



Place the lift on a suitable surface and feed out belt by gently pulling out belt while at the same time pressing the "Down" button on either the hand control or secondary panel. Hook lift belt onto distance strap so that it is held firmly in position (easiest to hook from above at an angle as shown). **Ensure the lift belt is firmly in place before use.**



### Slings

Attach head sling loops to carry bar first, then leg straps to leg hooks. Ensure the straps are secured beneath the safety pin.



### Proper lifting techniques

Do not use the telescoping bar to move the patient and the lift. Do not hold onto the hooks while performing a lift. Once the patient is comfortably secured in sling, raise lift, hold sling and position/move patient.

## General Care



Charge lift every night.



Disinfect with DuPont™ Virkon®.



Do not immerse in water.



Wipe down with slightly dampened drying cloth.



Never use strong detergents on lift.



Activate emergency stop when not in use.



**Important! Use only authorized methods to transport!** Lift must always be stored or moved in horizontal position. Rest on cart to move or use approved carry strap<sup>1</sup>.  
<sup>1</sup> Caution! When using strap, extra caution must be taken not to wrinkle or bend the lift belt.

## Inspection

**Annual Inspection** - The lift must be inspected at least once per year by a qualified technician certified by Human Care.

**Monthly Inspection** - Check lift belts for damage or wear.

Feed entire length to ensure proper functioning.

**Daily Inspection** - Always inspect the lift for visible signs of damage before use. Ensure the lift is correctly mounted on the distance strap or rail roller. Always check slings and belts for signs of wear before use. Do not use if wear evident.

## Troubleshooting



**If the indicator light is not on, check the following:**

- Mains switch is on
- Batteries do not require charging
- Emergency stop button is not pushed in (deactivate by turning clockwise)



**If the indicator light is flashing, check the following:**

- Check the hand control button functions up / down when depressed (replace if necessary)
- When pressing up, the lift is not already in its maximum upper position
- When pressing down, the lift is not already in its maximum lower position



**If the indicator light is constant red:**

- The lift motor is overheated - allow to cool
- The lift is overloaded - lower using emergency lowering button



**If the indicator light is constant yellow:**

- Charging in progress



**If the lift belt does not feed out properly:**

- Pull the belt upwards at the same time as you depress the Down button on the hand control / lift panel



**If the indicator changes to flashing red:**

- The batteries need charging, patient may be lifted a few more times